

# COMPLETE UPDATE

The latest news from ACM Waste Management PLC

Issue 6 - Autumn 2004



ACM had two stands at the RWM show held at the NEC, Birmingham, one in the main hall showing its Complete Care Programme and the other outside in the demonstration area displaying a selection of its high tech machinery.

The stands attracted a high number of visitors from a wide range of organisations and industries. The Complete Care Programme's holistic approach to waste proved to be of interest to a large number of visitors and the stand was busy throughout the duration of the show.

There were two contracts signed at the show. Syngenta first met ACM at RWM last

year showing interest in the ACM Gigant Roll Packer and the deal was clinched at this year's show. ACM will now supply Syngenta with a Gigant Roll Packer to crush tonnes of mixed waste, cutting the company's costs by at least £5,000 a year. The second contract was for Astra Seal Ltd again for a Gigant plus a mill size vertical baler and two twin chamber balers.



Complete Waste Management



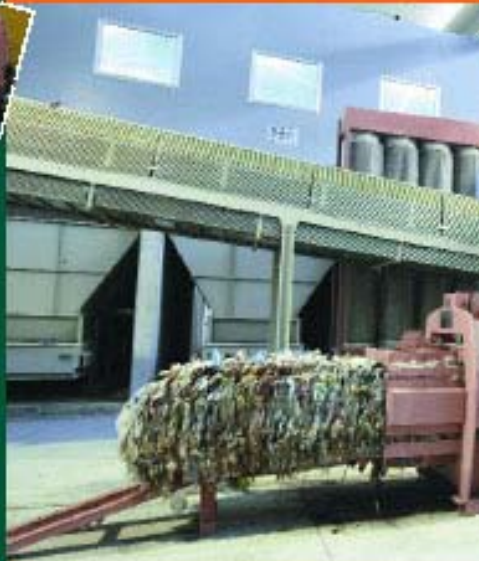
David Owen (right), Managing Logistics Manager of Agas, with Doug Lord, Technical Director of ACM Recycling Technology and the horizontal baler.

**STOP PRESS**

ACM is delighted to announce the appointment of Doug Lord as Technical Director of ACM Recycling Technology Ltd. Doug brings a number of key accounts to ACM including the UK agency for FAES horizontal balers and a Philadelphia Trainway manufacturer of custom vertical balers.



# Contin



## Good Show ACM (Continued)

The show also promoted the launch of a new corporate structure that will strengthen the position of the group by forming two focused operating divisions.

The divisions are the new ACM Recycling Technology Ltd and the existing ACM Compaction Technology Ltd.

ACM Recycling Technology Ltd reinforces the group's commitment to the environment by providing some of the world's leading recycling systems and equipment. It will offer end-to-end solutions for recycling including utilising existing and new machines in ACM's portfolio.

ACM Compaction Technology Ltd focuses on reducing waste volume and will continue to offer ACM's wide range of high tech compaction equipment. Providing waste stream analyses and assessments, ACM offers access to the financial benefits of waste compaction.

The new horizontal balers on display at the show attracted considerable interest of which the retail giant Agas recently signed up for one.

The deal will save the company an estimated £400,000 annually and cut vehicle journeys by at least 4,250 a year, creating a significant environmental improvement.

The ACM Group Structure



## ACM launches Horizontal

ACM has further strengthened its comprehensive equipment with the introduction of three new

## ACM drives down waste costs

ACM has slashed waste management costs by two thirds at German Swedish & French Car Parts (GSF).

ACM introduced its Complete Care Programme at GSF's Castle Bromwich distribution depot in Birmingham and as a result GSF's monthly waste costs have plummeted from £3,000 to just £1,000 a month.

GSF is one of the UK's largest independent suppliers of quality car parts for VW, Audi, BMW, Volvo, Mercedes, Saab, Peugeot, Citroen and Renault.

GSF was originally using skips to dispose of all the waste cardboard and wood



generated from deliveries, which was collected on a daily basis and taken to landfill.

Alan Amos, ACM's Regional Sales Manager, said: 'This proved very labour intensive. The new ACM Complete Care Programme has significantly cut down on collections.'

GSF's waste stream is also now far more environmentally friendly thanks to the guidance and expertise of ACM's waste consultants.

Alan added: 'We are now recycling all GSF's waste wood and cardboard. Not only is this better for the environment but they also get a rebate.'



# uous productivity



The three new balers, the HC2 50 25, HC70 and ML 65 are fully automatic baling presses that have been specially designed to produce high density bales from a variety of materials. They operate at between 2 to 40 m.t/hour.

Doug Lord, Technical Director, said: 'Each baler incorporates the latest technology to guarantee the maximum efficiency and profitability for your business.'

The benefit of the horizontal set up is that the machine can keep on processing as it does not have to be fed manually, unlike vertical mill size balers. This is particularly useful for high volume waste producers.'

As well as supplying the equipment, ACMI will also guide customers through the design stage, to final installation and commissioning. Computer Aided Design (CAD) software is used to tailor the system to customer requirements, including conveyor and pneumatic feed systems.

The new horizontal balers also incorporate the latest state of the art control technology, with a programmable automation facility that guarantees maximum performance with the minimum consumption of power.

Each has a hermetically sealed automatic tying system to ensure bale integrity and total reliability in the most adverse working conditions. They also incorporate a fully adjustable shear assembly and a magazine opener for newspapers and other materials without crushing.

Other options available include, full modern diagnostics, oil cooler, 'Densitronic' bale control, rufflers and bottle pierces.

Bery Bolton, Chairman said: 'The build quality of the machines is fantastic. The hydraulic unit has been developed to ISO9001 standards by one of the leading manufacturers in the world and utilises the highest quality components available.'

'The presses themselves are solid and offer great robustness. They have hydraulic powered gear train mechanisms for durability and low service reasons, are simple to use and allow work to be carried out in complete safety.'

Each model has its own particular features. The HC2 50 25 comes with a full shear facility. The HC70 is a high density model with fully pressurised bale tunnel and shear assembly. The ML 65 is designed for use on UBC's and metal swarfs, ideal for inclusion.

## ontal Mill Size Balers

ensive range of waste management  
ew horizontal mill size balers.



The first phase of the new ACMI website went live on the 10 September, and it contains everything you could possibly wish to know about ACMI, its products and services.

Leslee Burke, Sales and Marketing Manager, said: 'The new easy to use website couldn't be simpler to navigate. Just click on the hyperlinks and you can read all about the Complete Care Programme and all the latest waste and recycling machinery and services.'

The site also contains hyperlinks to case studies from satisfied customers, plenty of background information on ACMI, contact details, service and support information, and a questions and answers section, where CEO Andy Jacobs shares his knowledge.

'The website is by no means a finished product and we would certainly welcome any constructive feedback. Phase one was all about making the website consistent with our corporate image. Phase two will take it to the next level,' added Leslee.

Please email: lburke@acmplc.com with any comments

You can view the new website at

[www.acmplc.com](http://www.acmplc.com)

## Handy Andy

Ever wondered if you can bale two different sorts of plastic packaging together in one machine? Don't know if you've got enough space to start recycling? Maybe you're not confident how to use a compactor safely?

Who better to put your mind at ease and answer all your questions than ACMI's very own CEO, Andy Jacobs? Simply log on to the new website at

[www.acmplc.com](http://www.acmplc.com) and click on the 'your questions answered' hyperlink. You might just find the answers you were looking for.





## Relief for Kramp Agri

ACM has helped Bedfordshire based agricultural spare parts supplier Kramp Agri implement a comprehensive recycling scheme as part of its Complete Care Programme.

Kramp Agri will now be recycling all the cardboard, polythene and wood generated on site, which will reduce trips to landfill and benefit the environment.

Alan Amar, Regional Sales Manager, said: "We have introduced a large twin chamber baler and a recycling scheme at Kramp Agri's Biggleswade site. At ACM we believe in recycling as much waste as possible and compacting waste to cut down on haulage costs."

# ACM - a firm favourite

ACM joined forces with Onyx Environmental Group plc to supply a bespoke waste management package at this year's Royal Ascot race meeting.

Royal Ascot attracted more than 300,000 visitors who produced over 430 tonnes of waste including food, bottles, card and packaging.

Leslee Burke, ACM's Sales and Marketing Manager, said: "Together with Onyx, our aim was to ensure that standards of hygiene were kept at the highest possible level throughout."



The compactors supplied were in regular use throughout the

day and night, operated by a staff of between eight and 12. The Onyx/ACM partnership also provided a fleet of dustcarts, skip trucks, REL trucks and RoRo vehicles.

Chris Hill, Key Account Manager at Onyx, said: "We had approximately 30 vehicle movements throughout the day, and when you consider that all the roads were closed around the site and vehicles were not allowed to move between the hours of 10.00am and 7.00pm, we needed the compactors to be as efficient as possible to keep vehicle movements to a minimum."

Chris added: "Onyx invited ACM to assist because of the quality and reliability of its products, service and the engineering back up."



## ACM Celebrates the Super 70s and Awesome 80s in Style



Around 100 guests including ACM staff, family members, customers and suppliers, gathered at the home of ACM Chairman Barry Bolton in Nazeing, Essex for the long-awaited summer barbecue.

Guests entered into the spirit by donning 70s and 80s outfits and dancing away to classics from the era provided by a live band. There was a host of other entertainment including a magician, fireworks, bouncy castle and surf machine.

"The day was all about relaxing, having fun and celebrating the success of ACM. None of this would be possible if it wasn't for all the hard work put in by our staff and the relationships they have built with our first rate customers," said Barry.



## UPDATE WEEE/ROHS Directives

THE deadline is approaching for responses to a government draft consultation paper affecting the waste management industry.

Draft regulations and guidance for the Waste Electrical and Electronic Equipment (WEEE) and Restriction of Certain Hazardous Substances (ROHS) Directives have been issued and responses are due by October 29, 2004.

The paper sets out the regulatory

framework for producer responsibility for WEEE, whereby retailers will be required to offer a free take back service from August next year.

The ROHS Directive will restrict the inclusion of certain hazardous substances in electrical equipment.

## A welcome solution

Food design and process engineering specialist Welcome Food Ingredients has selected an ACM compactor for its Huthwaite head office near Nottingham.

Welcome Food wanted a waste compactor that was both economical and space saving, as floor space in the yard where it is located is limited. They also wanted a compactor capable of storing the ever-increasing amount of waste produced as the company expands.

Alex Sutton, Operations Director at Welcome Food, said: "We didn't have much yard space to play with so it was essential that we had a compactor that would fit in our yard."

Alex says the yard is now a much tidier and safer place to work as all the waste produced is sealed within the compactor unit.

## Your view counts

If you have a story or idea that you would like considered for entry in future editions of Complete Update, then please contact Leslee Burke on 020 8344 3071 or email: [lburke@scmpc.com](mailto:lburke@scmpc.com)



Complete Waste Management

ACM Waste Management PLC,  
ACM House, Mollison Avenue, Brimsdown,  
Enfield, Middlesex EN3 7NJ

t: 08700 777 955 f: 020 8804 0166

e: [acm@scmpc.com](mailto:acm@scmpc.com) or [www.acmpc.com](http://www.acmpc.com)