

Leading the way in recycling and waste management

Semi and Auto-Tie Horizontal Balers



Horizontal Balers

Think green

By using ACM's compaction equipment, not only will you greatly reduce the number of vehicle movements to landfill sites, you can also dramatically reduce your waste related carbon footprint.

Three compelling reasons to review your waste management operation:

- **Compliance** - Government legislation means that you now have a legal obligation to ensure your waste undergoes pre-treatment (reuse, recycling or energy recovery) prior to landfill.
- **Cost** - Waste disposal costs are soaring year on year so you need to protect your bottom line.
- **Customers** - Your customers care about your environmental performance and want their service providers to help combat dangerous climate change.

Semi Automatic Balers

There are four standard machines in our range. The 40 tonne semi automatic baler has a 15kW motor and produces a 'mill size' bale weighing between 500 - 650kg depending on the product.

The baler is suitable for a wide range of materials including cardboard, paper and plastic.

The baler is of all welded construction. It features a 1500mm x 1050mm charge box which can process large particles of waste directly without pre-treatment. The bale length is variable between 762mm - 1524mm. The semi automatic baler has a 50 second cycle time which combined with an efficient and quick bale tie off system can enable the machine to process up to 2.4 tonnes per hour. Feed options include hydraulic bin tipper, conveyor and chute.

The larger 55 tonne and 65 tonne semi automatic balers are ideal for baling plastic bottles, cans and foam. The 105 tonne semi automatic baler is a heavy duty 38kW machine designed for non-ferrous and scrap metals.

Features/Benefits

- Full bale eject
- Full penetration for maximum compaction
- Fast cycle time
- Full shear assembly
- Quiet operation
- Wire guides for quick and easy tie-offs
- PLC controlled
- Interlocked safety guards
- Bale ready indicator
- Photo cell start
- CE compliant
- 24v control circuitry

Options

- Customer designed hopper
- Conveyor or chute feed
- Remote telemetry
- Integrated bin tipper
- Oil heater
- Temperature shut down
- Remote power pack





Leading the way in recycling and waste management



Auto-Tie Balers

ACM have 25 standard models in the range which can process 5 - 40 tonnes per hour. A choice of four power packs per model 20-100hp and ram pressure of 55-160 tonnes. We have a choice of non shear balers for trim waste, wide and narrow baler options with adjustable shear suitable for cardboard, paper and plastics.

The side feed unique patented tie system uses efficient gear twister which means no twister hooks resulting in no pigtails saving 15% in wire costs. Other features include 500 brinell steel liners, modem and touch screen controls.

Features/Benefits

- Can process up to 30 tonnes p/hr up to 100 hp motors
- Up to 160 tonnes pressing force
- Loaded with innovative features
- Increased productivity
- Years of efficient operation
- Operating cost savings

- Single cylinder tension system which leverages and generates force on all four sides
- All pivot points have solid steel bushings and grease fittings
- Flexible cross tube cylinder mounts allow for removal of cylinder from the side of the machine
- Tier and twister box pivot for easy maintenance
- Inserters and gear twisters are driven by hydraulic motors
- Dust is controlled through the use of Nylatron shims and special programming



BETTER ENVIRONMENTAL PERFORMANCE

Technical data

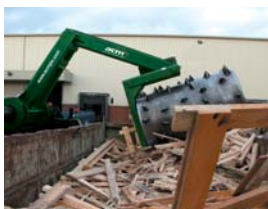
Semi Automatic Balers

	HPH 40	Gemini	Atlas Metal Crusher
Hopper	1500mm x 1050mm	900mm x 1400mm	1143mm x 1500mm
Bale size (mm)	800 x 1100 x 1450	762 x 1219 x 1524	762 x 1219 x 1500
Bale weight	Up to 600 kg	Up to 600kg	Up to 600kg
Dimensions (mm)	7145 x 1830 x 1200	3785 x 2350 x 1334	6705 x 2209 x 2032
Weight	5500kg	8000kg	14500kg
Ram pressure	40 tonne	55/65 tonne	105 tonne
Main cylinder	160 x 210 x 2500	152 x 102 x 1500	254 x 178 x 2438
Volume/throughput	2.4 tonnes p/hr 130m ³ /hr	2.4 tonnes p/hr	2.4 tonnes p/hr
Cycle time (sec)	50	34	22
Shear assembly	Fully Reversible	Fully Reversible	Fully Reversible
Tie method	Manual, 4 x steel/fabric, 3.0mm x 5000mm	Manual, 4 x steel/fabric, 3.0mm x 5000mm	Manual, 4 x steel/fabric, 3.0mm x 5000mm
Liners	T1 Replaceable	T1 Replaceable	T1 Replaceable
Guidance	Polymide Replaceable	Polymide Replaceable	Polymide Replaceable
Motor	15kW	15kW	38kW
Electrical	415V 3ø50~	415V 3ø50~	415V 3ø50~

Auto-Tie Balers

	Cylinder Sizes:	Feed Opening:	Available Power Units (HP):
PC 3230	7	32" x 28"	20, 30, 50 or 2 x 30
PC 4430	7	44" x 28"	20, 30, 50 or 2 x 30
PC 3230	8	32" x 28"	20, 30, 50 or 2 x 30
PC 4430	8	44" x 28"	20, 30, 50 or 2 x 30
NS 5030	9	27" x 50"	30, 50, 2x30, 75, or 100
NS 5030	10	27" x 50"	30, 50, 2x30, 75, or 100
WS 5042	8	39" x 50"	30, 50, 2x30, or 75
WS 5042	9	39" x 50"	30, 50, 2x30, 75, or 100
WS 5042	10	39" x 50"	30, 50, 2x30, 75, or 100
WS 6042	8	39" x 60"	30, 50, 2x30, or 75
WS 6042	9	39" x 60"	30, 50, 2x30, 75, or 100
WS 6042	10	39" x 60"	30, 50, 2x30, 75, or 100
EWS 6048	8	45" x 60"	30, 50, 2x30, or 75
EWS 6048	9	45" x 60"	30, 50, 2x30, 75, or 100
EWS 6048	10	45" x 60"	30, 50, 2x30, 75, or 100
WS 7242	8	39" x 72"	30, 50, 2x30, or 75
WS 7242	9	39" x 72"	50, 2x30, 75, or 100
WS 7242	10	39" x 72"	50, 2x30, 75, or 100
EWS 7248	8	45" x 72"	30, 50, 2x30, or 75
EWS 7248	9	45" x 72"	50, 2x30, 75, or 100
EWS 7248	10	45" x 72"	50, 2x30, 75, or 100
WS 8442	10	39" x 84"	2x30, 75, 100, 2x50, or 2x75
WS 8442	12	39" x 84"	75, 100, 2x50, or 2x75

Other core products



Mammoth Roll Packers
Ideal for compacting large, bulky and medium density materials.



Portable Compactors
100% leakproof waste storage available in a diverse range.



Static Compactors
An ideal solution for economically disposing large quantities of waste.



Single & Multi Chamber Balers
A space saving and efficient recycler for any material.



Mill Size Balers
Producing mill sized bales for optimum financial return.

ACM can provide over 2000 plus different design and size variations as well as one-off bespoke units. For this reason please contact ACM direct for your unique design and site specification.



Member of the Environmental Services Association



ACM Waste Management PLC, ECO House, Lea Road, Waltham Abbey, EN9 1AS
t: 0844 884 4190 f: 0844 884 4197 e: green@acmplc.com w: www.acmplc.com

