

Leading the way in recycling and waste management

Portable Compactors



Portable Compactors

Think green

By using ACM's compaction equipment, not only will you greatly reduce the number of vehicle movements to landfill sites, you can also dramatically reduce your waste related carbon footprint.

Three compelling reasons to review your waste management operation:

- **Compliance** - Government legislation means that you now have a legal obligation to ensure your waste undergoes pre-treatment (reuse, recycling or energy recovery) prior to landfill.
- **Cost** - Waste disposal costs are soaring year on year so you need to protect your bottom line.
- **Customers** - Your customers care about your environmental performance and want their service providers to help combat dangerous climate change.

Rolonof and Skip

The Rolonof portable compactors are available from 16m³ - 24m³. All machines in the standard range have 5.5kW motors and a twin ram force of 30 tonnes. It has a compaction ratio of up to 6:1 and is therefore capable of producing payloads far in excess of conventional compactors with the added advantage of being 100% leak-proof and odour proof.

Portable compactors have many benefits: reduced fire risk, improved hygiene due to less refuse spillage, restricted entry to vermin and insects and minimisation of odours due to its closed design. Portable compactors are more suited for food waste applications.

Enclosed portable compactors are more suitable where sites have 'open access' areas to the public. It is of conical construction which guarantees trouble free emptying and ensures a quick turn around at the land fill site. These compactors feature a large 1656mm x 1900mm filling aperture which enables easy and safe loading of waste by hand or fork lift. The compactor requires a hard, level standing area on which to be sited.

Features/Benefits

- Full warning
- Rear door sealed warning light
- Multi-cycle timer
- Telescopic, hydraulic & electrical service platform
- Spherical self aligning cylinders
- Adjustable Nylatron wear blocks
- Inbuilt base scraper
- 12mm floor plate
- Lockable control panel
- Conical design for easy discharge
- Leakproof discharge door
- PLC controlled
- Full safety Interlocks
- Cleanline design with additional strengthening
- CE compliant
- Controls both sides
- 24v control circuitry
- Material retention claws
- Dual hand loading doors (Rolonof Portable Compactors only) with bin tipper





Leading the way in recycling and waste management



Options for both portable compactors

A wide range of accessories are available, tailor made to meet all demands including:

- Spring balance lids for the filling aperture
- Automatic tipping devices
- Optional wall connection funnels for chute feeding
- Remote telemetry - for automatic emptying and fault diagnosis
- New streamline body available
- Access/vandal protection systems
- Optional swivel device
- Shredder attachment available
- Extra safety and warning devices



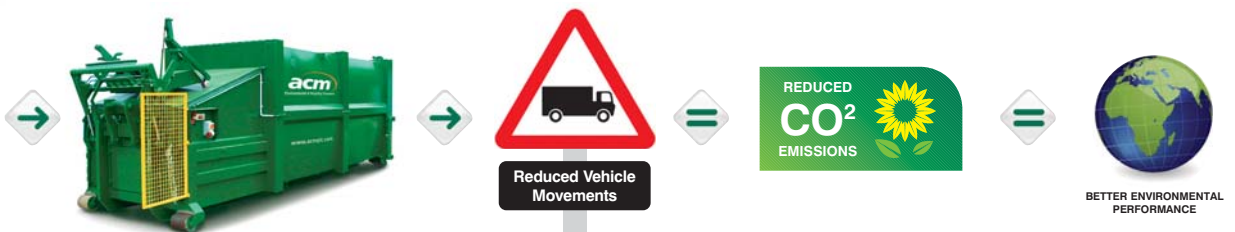
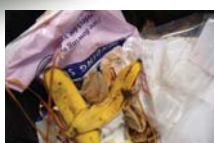
Built in tipping device



Tipper & Shredder Options



Through wall chute fed



Technical data

ACM Rolonof Portable Compactor

| Type | ACMP16 | ACMP18 | ACMP20 | ACMP22 | ACMP24 |
|--------------------------------|--------------------|--------------------|--------------------|--------------------|--------------------|
| Motor | 5.5kW | 5.5kW | 5.5kW | 5.5kW | 5.5kW |
| Electrical | 415V 3ø50~ | 415V 3ø50~ | 415V 3ø50~ | 415V 3ø50~ | 415V 3ø50~ |
| Compaction Force | 30t | 30t | 30t | 30t | 30t |
| Cycle Time | 38 sec | 38 sec | 38 sec | 38 sec | 38 sec |
| Capacity | 16m ³ | 18m ³ | 20m ³ | 22m ³ | 24m ³ |
| Volume/stroke | 1.31m ³ | 1.31m ³ | 1.31m ³ | 1.31m ³ | 1.31m ³ |
| Volume/hr | 108m ³ | 108m ³ | 108m ³ | 108m ³ | 108m ³ |
| Length | 5900mm | 6150mm | 6400mm | 6650mm | 6900mm |
| Length c/w tipper | 6320mm | 6520mm | 6920mm | 7400mm | 7585mm |
| Width | 2550mm | 2550mm | 2550mm | 2550mm | 2550mm |
| Height | 2660mm | 2660mm | 2660mm | 2660mm | 2660mm |
| Filling Opening (L x W) | 1656 x 1900mm | 1656 x 1900mm | 1656 x 1900mm | 1656 x 1900mm | 1656 x 1900mm |
| Filling Height | 1300mm | 1300mm | 1300mm | 1300mm | 1300mm |
| Total Weight | 4750kg | 4800kg | 4900kg | 5050kg | 5250kg |

ACM P8 Skip Portable Compactor

| | |
|--------------------------------|----------------------|
| Motor | 5.5kW |
| Electrical | 415V 3ø50~ |
| Compaction Force | 34 tons |
| Cycle Time | 33 sec |
| Capacity | 8m ³ |
| Filling Opening (L x W) | 1450 x 1500mm |
| Filling Height | 1500mm |
| Volume /stroke | 1m ³ |
| Volume/hr | 120m ³ |
| Total (L x W x H) | 3670 x 1880 x 2200mm |
| Length c/w tipper | 5770mm |
| Total Weight | 3170kg |

Other core products



Mammoth Roll Packers
Ideal for compacting large, bulky and medium density materials.



Static Compactors
An ideal solution for economically disposing large quantities of waste.



Single & Multi Chamber Balers
A space saving and efficient recycler for any material.



Mill Size Balers
Producing mill sized bales for optimum financial return.



Closed End Horizontal Balers
For semi-automatic baling of large quantities of recyclable materials. Systems can be air or conveyor fed for even greater productivity.

ACM can provide over 2000 plus different design and size variations as well as one-off bespoke units. For this reason please contact ACM direct for your unique design and site specification.



Member of the Environmental Services Association



ACM Waste Management PLC, ECO House, Lea Road, Waltham Abbey. EN9 1AS
t: 0844 884 4190 f: 0844 884 4197 e: green@acmplc.com w: www.acmplc.com

acmTM
Environmental & Recycling Champions